

MIDJ

Suspense table

design Studio F+B Design, 2020

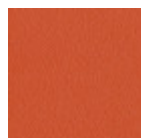


Suspense table lamp with direct diffused light. The diffuser is made of satin glass and is adjustable in height along the support bar. The support is made of metal in the single variant in black. The white and opal light runs along the band in an exercise of timeless forms.

On the electric power cable there is the on / off switch. The cable has a length of 1.5 m and is covered with black silk.

Colors and Materials

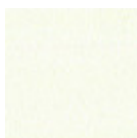
Structure



Papaya orange steel



Light blue metal



White steel



Ocean blue steel



Bronze metal



Sand steel



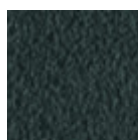
Fango steel



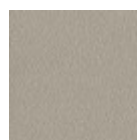
Golden yellow metal



Pastel yellow steel



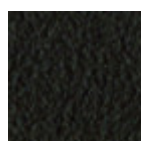
Grafite metal



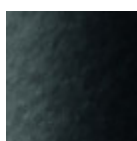
Ash grey metal



Light grey steel



Brown steel



Black steel



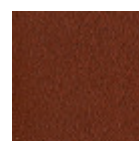
Ocher steel



Facepowder pink metal



Red steel



Bulgaro red metal



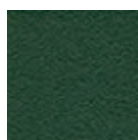
Cherry red metal



Pine green steel

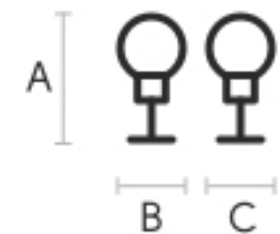


Sage green metal



Dark green metal

Dimensions

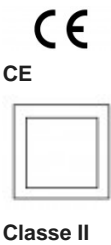


A (cm)	B (cm)	C (cm)
(inch)	(inch)	(inch)
32	10	10
12.6	3.9	3.9

Volumetric Details

Weight 2.9 Kg
Volume 0.024 mc
Package 1

Certifications



CE

Classe II

Materials Certifications

Dark green metal

The technologies used in the previous phase of powder coating play a fundamental role in the final result of the processing. They are in fact essential to increase adherence paint on the metal surface and then guarantee its duration over time. The metal frames, following a total cleaning of the surface, pass through chemical conversion processes, creating a compact base that allows for better adhesion of the subsequent treatment. In the last phase the object subjected to the powder coating process is placed in a polymerization oven, going to form an adherent and extremely tight layer durable. This particular paint job is ideal for outdoor use.

To clean the surface, use a damp microfiber cloth with neutral soap or specific metal cleaning products. Avoid hitting or rubbing the surface with sharp objects. Do not use scourers or other abrasive materials, since they would inevitably scratch the surface. Do not leave rusty iron objects on the surface for too long.

These surface treatments are not suitable for outdoor use, but they guarantee excellent resistance to frequent use, dirt and dust.