

MIDJ

Suspense floor

design Studio F+B Design, 2020



Suspense floor lamp with direct diffused light. The diffuser is made of satin glass and is adjustable in height along the support bar.

The structure is made of metal in the single black color variant. The white and opal light runs along the band in an exercise of timeless forms.

On the electric power cable there is the on / off foot switch. The cable has a length of 2m and is covered in black silk.

Colors and Materials

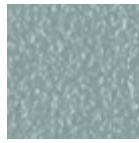
Structure



Black steel



Papaya orange steel



Light blue metal



White steel



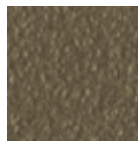
Ocean blue steel



Bronze metal



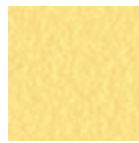
Sand steel



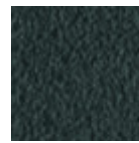
Fango steel



Golden yellow metal



Pastel yellow steel



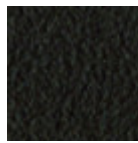
Grafite metal



Ash grey metal



Light grey steel



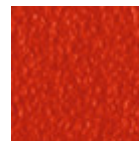
Brown steel



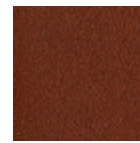
Ocher steel



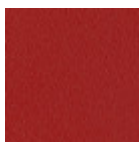
Facepowder pink metal



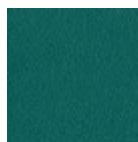
Red steel



Bulgaro red metal



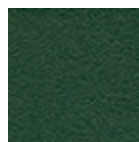
Cherry red metal



Pine green steel

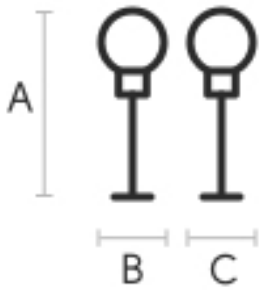


Sage green metal



Dark green metal

Dimensions



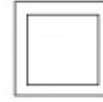
Volumetric Details

Weight 16.5 Kg
Volume 0.215 mc
Package 1

Certifications



CE



Classe II

A (cm)	B (cm)	C (cm)
(inch)	(inch)	(inch)
170	26	28
66.9	10.2	11

Materials Certifications

Dark green metal

The technologies used in the previous phase of powder coating play a fundamental role in the final result of the processing. They are in fact essential to increase adherence paint on the metal surface and then guarantee its duration over time. The metal frames, following a total cleaning of the surface, pass through chemical conversion processes, creating a compact base that allows for better adhesion of the subsequent treatment. In the last phase the object subjected to the powder coating process is placed in a polymerization oven, going to form an adherent and extremely tight layer durable. This particular paint job is ideal for outdoor use.

To clean the surface, use a damp microfiber cloth with neutral soap or specific metal cleaning products. Avoid hitting or rubbing the surface with sharp objects. Do not use scourers or other abrasive materials, since they would inevitably scratch the surface. Do not leave rusty iron objects on the surface for too long.

These surface treatments are not suitable for outdoor use, but they guarantee excellent resistance to frequent use, dirt and dust.